



 **Primary 3 - Term 1 (CA1) Science (Pei Hwa)**
 Duplicate

 Print

 Delete

 Assign Test
**Test Introduction**

+ Add Introduction

**15 Questions** (12 Points)Question Bank: 19,439 Questions 

Test Questions

1 Test Assignment







**Question 1**

Primary 3 Science » Primary 3 Science (Term 1)

2 pts

For each question, from 1 to 6, four options are given. One of them is correct. (12 marks)

The table below shows how some things are classified based on a certain property.

Group A	Group B
 <b>Life vest</b>	 <b>Ceramic knife</b>
 <b>Plastic spoons</b>	 <b>Metal key</b>
 <b>Wooden ruler</b>	 <b>Metal nail clipper</b>

How is the property in Group A different from that in Group B?

	Group A	Group B
(1)	Float	Sink
(2)	Stiff	Flexible
(3)	Absorbs water	Cannot absorb water
(4)	Allow little light to pass through	Allow most light to pass through

- ✓ A) Option 1
- B) Option 2
- C) Option 3
- D) Option 4

---

**Question Type:** Multiple Choice  
**Randomize Answers:** No  
**Date Added:** Thu 6th Feb 2020  
**Last Modified:** N/A  
**QID#:** 18,630,076

[Answers](#) | [Edit](#) | [Duplicate](#) | [Used In](#) | [Reorder](#)

[Remove From Test](#)

## Question 2

Primary 3 Science » Primary 3 Science (Term 1)

2 pts

Which material(s) would be most suitable for making chopsticks for young children?

- A Paper
- B Wood
- C Glass
- D Plastic

- A) Paper
- B) Wood
- C) Glass
- ✓ D) Plastic

---

**Question Type:** Multiple Choice  
**Randomize Answers:** No  
**Date Added:** Thu 6th Feb 2020  
**Last Modified:** N/A  
**QID#:** 18,630,079

[Answers](#) | [Edit](#) | [Duplicate](#) | [Used In](#) | [Reorder](#)

[Remove From Test](#)

## Question 3

Primary 3 Science » Primary 3 Science (Term 1)

2 pts

- A) A and B only
- ✓ B) A, B and D only
- C) B, C and D only
- D) A, B, C and D

---

**Question Type:** Multiple Choice  
**Randomize Answers:** No

Date Added: Thu 6th Feb 2020  
 Last Modified: N/A  
 QID#: 18,630,086

[Answers](#) | [Edit](#) | [Duplicate](#) | [Used In](#) | [Reorder](#)

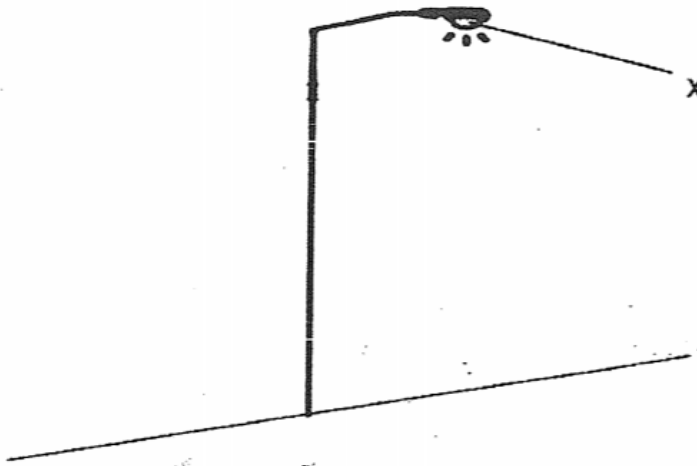
[Remove From Test](#)

## Question 4

Primary 3 Science » Primary 3 Science (Term 1)

2 pts

Lamp posts on the streets light the way in the late evening and at night.



Which of the following shows the correct properties of the material used to make part 'X' of the lamp post?

	Waterproof	Allows most light to pass through
(1)	No	Yes
(2)	Yes	Yes
(3)	No	No
(4)	Yes	No

- A) Option 1  
 ✓ B) Option 2  
 C) Option 3  
 D) Option 4

Question Type: Multiple Choice  
 Randomize Answers: No  
 Date Added: Thu 6th Feb 2020  
 Last Modified: N/A  
 QID#: 18,630,093

[Answers](#) | [Edit](#) | [Duplicate](#) | [Used In](#) | [Reorder](#)

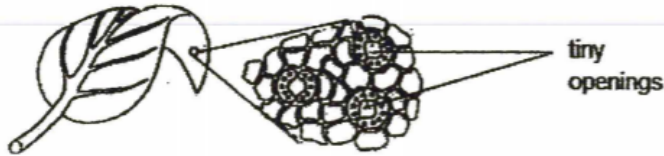
[Remove From Test](#)

## Question 5

Primary 3 Science » Primary 3 Science (Term 1)

2 pts

Study the diagram carefully.



The purpose of the tiny openings on the leaves is to \_\_\_\_\_.

- A) trap light energy from the sun.
- B) support the stem to stay upright.
- ✓ C) help to take in and give out gases.
- D) absorb water and minerals for the plant.

**Question Type:** Multiple Choice  
**Randomize Answers:** No  
**Date Added:** Thu 6th Feb 2020  
**Last Modified:** N/A  
**QID#:** 18,630,099

[Answers](#) | [Edit](#) | [Duplicate](#) | [Used In](#) | [Reorder](#)

[Remove From Test](#)

## Question 6

Primary 3 Science » Primary 3 Science (Term 1)

2 pts

Which of the following statements about plants is not true?

- ✓ A) All plants bear fruits.
- B) Most plants have leaves.
- C) Some plants produce flowers.
- D) Plants can be classified into flowering and non-flowering plants.

**Question Type:** Multiple Choice  
**Randomize Answers:** No  
**Date Added:** Thu 6th Feb 2020  
**Last Modified:** N/A  
**QID#:** 18,630,104

[Answers](#) | [Edit](#) | [Duplicate](#) | [Used In](#) | [Reorder](#)

[Remove From Test](#)

## Question 7

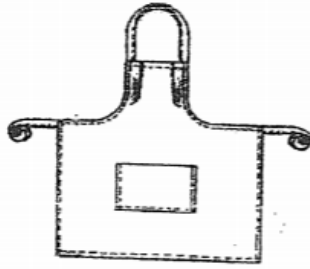
Primary 3 Science » Primary 3 Science (Term 1)

0 pts

Following questions are designed for extended answers that parent/ teacher will have to assign and guide child to attempt after the test has been completed.

**Grading:** This question type is not graded on this system and will not affect the final score as it was designed in such a way that it requires manual assistance.

An apron is wrapped over the front of our clothes.



Identify the two properties of materials that have to be taken into consideration when selecting the material to make an apron for **kitchen use**.

**Question Type:** Essay  
**Date Added:** Thu 6th Feb 2020  
**Last Modified:** Fri 27th Mar 2020  
**QID#:** 18,630,111

**Correctly answered feedback**

It must be flexible and strong.

**Incorrectly answered feedback**

It must be flexible and strong.

[Answers](#) | [Edit](#) | [Duplicate](#) | [Used In](#) | [Reorder](#)

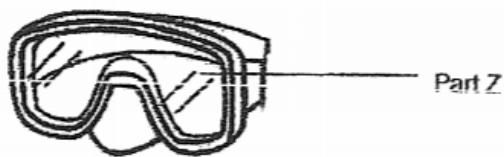
[Remove From Test](#)

## Question 8

Primary 3 Science » Primary 3 Science (Term 1)

0 pts

John has a pair of diving goggles as shown below.



Suggest a suitable material for Part Z and give a reason for the choice of the material, in terms of its property and its use.

**Question Type:** Essay  
**Date Added:** Thu 6th Feb 2020  
**Last Modified:** Fri 27th Mar 2020  
**QID#:** 18,630,115

**Correctly answered feedback**

Plastic. It is lightweight so it is comfortable for the diver to wear.

**Incorrectly answered feedback**

Plastic. It is lightweight so it is comfortable for the diver to wear.

[Answers](#) | 
 [Edit](#) | 
 [Duplicate](#) | 
 [Used In](#) | 
 [Reorder](#)

[Remove From Test](#)

## Question 9

Primary 3 Science » Primary 3 Science (Term 1)

0 pts

Mike wants to find out which material A, B, C or D is most suitable to make into a toy penguin for children to play with during bath time. The results of his experiment are shown below. A tick (✓) shows that the material has the property and a cross (X) shows that the material does not have the property.

Property	Material			
	A	B	C	D
Sinks in water	✓	X	X	X
Waterproof	✓	✓	✓	X
Flexible	X	✓	X	✓
Strength	✓	✓	X	✓

Based on the results shown in the table above, which of the materials A, B, C or D is most suitable to make the toy penguin?

**Question Type:** Essay

**Date Added:** Thu 6th Feb 2020

**Last Modified:** Fri 27th Mar 2020

**QID#:** 18,630,123

**Correctly answered feedback**

Material B

**Incorrectly answered feedback**

Material B

[Answers](#) | 
 [Edit](#) | 
 [Duplicate](#) | 
 [Used In](#) | 
 [Reorder](#)

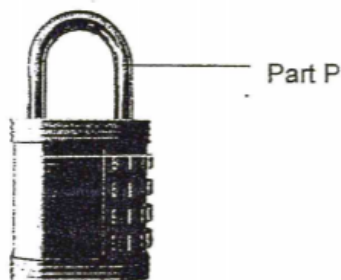
[Remove From Test](#)

## Question 10

Primary 3 Science » Primary 3 Science (Term 1)

0 pts

The diagram below shows a metal lock used to lock the lockers.



Based on the results in the table (refer to previous question), which material, A, B, C or D, is most suitable for making part P?

What properties in the table (refer to previous question) show that the material chosen is most suitable?

**Question Type:** Essay

**Date Added:** Thu 6th Feb 2020

**Last Modified:** Fri 27th Mar 2020

**QID#:** 18,630,133

**Correctly answered feedback**

Material A. It is strong, stiff and waterproof.

**Incorrectly answered feedback**

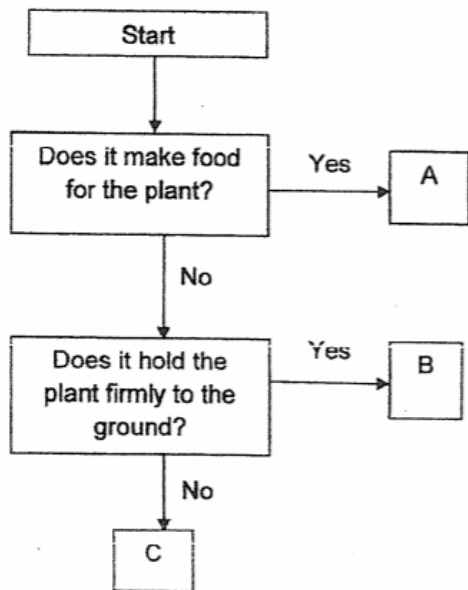
Material A. It is strong, stiff and waterproof.

[Answers](#) | [Edit](#) | [Duplicate](#) | [Used In](#) | [Reorder](#)
[Remove From Test](#)**Question 11**

Primary 3 Science » Primary 3 Science (Term 1)

0 pts

The flow chart shows the different main functions of 3 different plant parts, leaves, roots and stem.



Which part, A, B or C shows the function of the leaves of the plant?

**Question Type:** Essay  
**Date Added:** Thu 6th Feb 2020  
**Last Modified:** Fri 27th Mar 2020  
**QID#:** 18,630,137

**Correctly answered feedback**

Part A

**Incorrectly answered feedback**

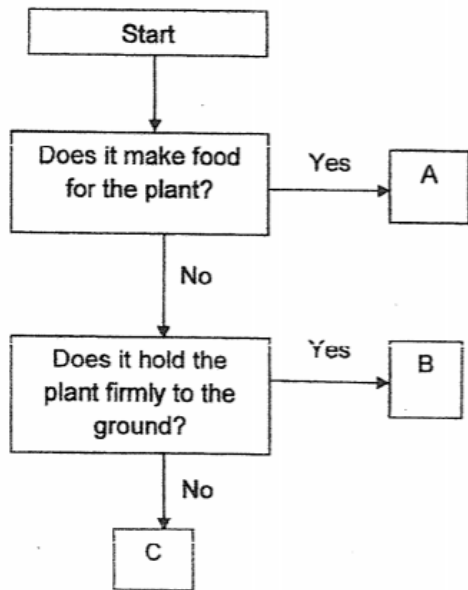
Part A

[Answers](#) | [Edit](#) | [Duplicate](#) | [Used In](#) | [Reorder](#)
[Remove From Test](#)**Question 12**

Primary 3 Science » Primary 3 Science (Term 1)

0 pts

The flow chart shows the different main functions of 3 different plant parts, leaves, roots and stem.



State the plant parts for B.

Question Type: Essay  
Date Added: Thu 6th Feb 2020  
Last Modified: Fri 27th Mar 2020  
QID#: 18,630,141

**Correctly answered feedback**

Roots

**Incorrectly answered feedback**

Roots

[Answers](#) | [Edit](#) | [Duplicate](#) | [Used In](#) | [Reorder](#)

[Remove From Test](#)

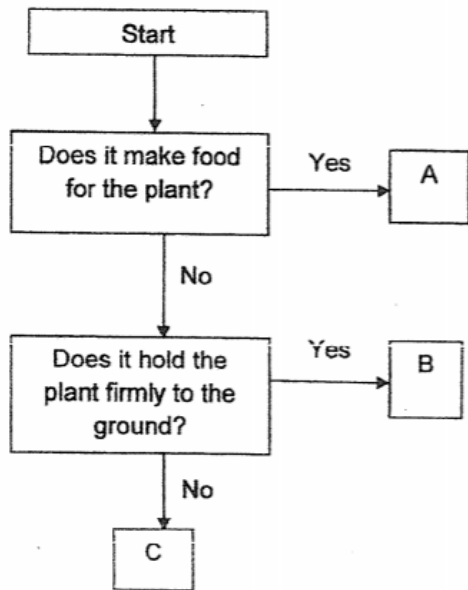
## Question 13

Primary 3 Science » Primary 3 Science (Term 1)

0 pts



The flow chart shows the different main functions of 3 different plant parts, leaves, roots and stem.



State the plant parts for C.

**Question Type:** Essay  
**Date Added:** Thu 6th Feb 2020  
**Last Modified:** Fri 27th Mar 2020  
**QID#:** 18,630,145

**Correctly answered feedback**

Stem

**Incorrectly answered feedback**

Stem

[Answers](#) | [Edit](#) | [Duplicate](#) | [Used In](#) | [Reorder](#)

[Remove From Test](#)

## Question 14

Primary 3 Science » Primary 3 Science (Term 1)

0 pts

James found some seeds from a plant. He told his classmate, Kent, that all plants grow from seeds. Kent said that he was wrong.

Other than reproducing from seeds, what is another way that plants can reproduce from?

**Question Type:** Essay  
**Date Added:** Thu 6th Feb 2020  
**Last Modified:** Fri 27th Mar 2020  
**QID#:** 18,630,151

**Correctly answered feedback**

Plants can reproduce by spores.

**Incorrectly answered feedback**

Plants can reproduce by spores.

[Answers](#) | [Edit](#) | [Duplicate](#) | [Used In](#) | [Reorder](#)

[Remove From Test](#)

**Question 15**

Primary 3 Science » Primary 3 Science (Term 1)

0 pts

Give an example of a plant that reproduce the same way as in the previous question.

**Question Type:** Essay  
**Date Added:** Thu 6th Feb 2020  
**Last Modified:** Fri 27th Mar 2020  
**QID#:** 18,630,153

**Correctly answered feedback**

Bird's Nest Fern

**Incorrectly answered feedback**

Bird's Nest Fern

[Answers](#) | [Edit](#) | [Duplicate](#) | [Used In](#) | [Reorder](#)

[Remove From Test](#)